
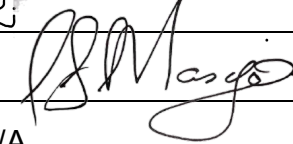


	<div>KRIEL POWER STATION</div> <div>SCOPE OF WORK-HORTICULTURE</div>	Template identifier	555-RER2000	Rev	1
		Document Identifier:	555-RER 2001	Rev	1
		Effective date:	1 August 2022		
		Next review date:	31 August 2025		
		Page 1 of 28			

<b>PLANT AREA: Kriel Power Station</b>			
<b>TITLE:</b> <i>Scope of Work for Horticulture and Grounds Maintenance at Kriel Power Station</i>			
<b>COMPILED BY</b>	<b>Name: Simangele Keetse</b> <b>Designation: Horticulture Officer</b>	Signature: 	Date: 29/08/2022
<b>APPROVED</b>	<b>Name: Solly Masogo</b> <b>Designation: Manager: Coal Supply Manager</b>	Signature: 	Date: 29/08/2022
<b>APPROVED</b>	<b>Name:</b> <b>Designation: Quality</b>	Signature: N/A	Date:
<b>APPROVED</b>	<b>Name:</b> <b>Designation: Safety</b>	Signature: N/A	Date:
<b>ACCEPTED</b>	<b>Name:</b> <b>Designation: Engineering</b>	Signature: N/A	Date:
<b>ACCEPTED</b>	<b>Name: N/A</b>	Signature: N/A	Date:

### **GENERAL**

- Data books, reviews, reports and diagrams/drawings shall be submitted to Engineering after the completion of the work. Engineering to forward the data books to Quality Department (Document Control)
- All QCP's to be submitted to Engineering and Quality for approval prior to outage/project or maintenance work commencement.

	SCOPE OF WORK DESCRIPTION / ACTIVITY	PROCEDURE, SPECIFICATION, ENG. REQUIREMENTS / DOCUMENTATION	HOLD POINTS, WITNESS, REPORTS	RESPONSIBLE PARTY
1.1	Safety	<ul style="list-style-type: none"> <li>• All work is to be done in accordance with Kriel plant procedures and safety regulations.</li> <li>• Kriel power station induction must be done before any work commences.</li> <li>• Permit to work must be in place before any work commences.</li> </ul>	Eskom to witness.	Contractor

		<ul style="list-style-type: none"> <li>Worker's register must be completed and daily risk assessment conducted before any work commences.</li> </ul>		
1.2	Environmental Management.	<ul style="list-style-type: none"> <li>All activities listed in the National Environmental Act 107 of 1998, EIA Regulations as amended, must have environmental <b>AUTHORISATION</b> before commencement of work.</li> <li>The contractor shall comply with all applicable legal and other requirements.</li> <li>The polluter pays principle will be applied.</li> <li>The contractor manager shall ensure compliance with Eskom Kriel Environmental procedures to ensure the prevention of pollution.</li> <li>of designated area.</li> <li>EMS file based on ISO14001 will be required.</li> </ul>	Eskom to witness.	Contractor
1.3	Quality Management	<ul style="list-style-type: none"> <li>The contractor/executioner of work will be responsible for drawing up all QCP documentation and this must be approved by engineering and authorised by the Quality Department before commencing with the work.</li> <li>Contractors/executioner to adhere to Quality requirements</li> <li>Number of NCR issued can affect your next tendering process.</li> <li>The QCP shall be signed progressively by the Engineer/Supervisor, Eskom QC Inspector, Contractor QC Inspector and/or AIA.</li> <li>No contractor should be in the possession of scopes for execution without the scopes approved by quality</li> <li>The contractor is subjected to quality auditing at any point in time during execution of scope</li> </ul>	Eskom to witness	Contractor

**Public**

When downloaded from the document management system, this document is uncontrolled and the responsibility rests with the user to ensure it is in line with the authorised version on the system.

No part of this document may be reproduced without the expressed consent of the copyright holder, Eskom Holdings SOC Ltd, Reg No 2002/015527/30.

	SCOPE OF WORK DESCRIPTION / ACTIVITY

**DETAILED SCOPE OF WORK FOR THE GRASS CUTTING AT KRIEL ASH DAMS AND CSY “AS AND WHEN REQUIRED”**

**1. INTRODUCTION:**

- ERI is operating and maintain the Eskom – Kriel power station Ash dams and Coal Stockyard
- Grass, reeds and trees is required to be kept short for safe access and inspection purposes around the Kriel Ash dam and Coal Stock Yard (CSY) area.
- It is expected that the Contractors invited and awarded the tender on grass cutting project is expert in their field and that the following scope of work should only be used as a guide.

**Public**

When downloaded from the document management system, this document is uncontrolled and the responsibility rests with the user to ensure it is in line with the authorised version on the system.

No part of this document may be reproduced without the expressed consent of the copyright holder, Eskom Holdings SOC Ltd, Reg No 2002/015527/30.

### SCOPE OF WORK / SPECIFICATION

- Cutting of the grass and reeds at the following areas;
  - Office area; ERI Office, AWR pump house, workshop and pipe lines
    - 46,215m<sup>2</sup>



- AWR dams area;
  - $23,800\text{m}^2 + (1.210\text{m} \times 5\text{m}) 6,050\text{m}^2 = 29,850\text{m}^2$

**Public**

When downloaded from the document management system, this document is uncontrolled and the responsibility rests with the user to ensure it is in line with the authorised version on the system.

No part of this document may be reproduced without the expressed consent of the copyright holder, Eskom Holdings SOC Ltd, Reg No 2002/015527/30.

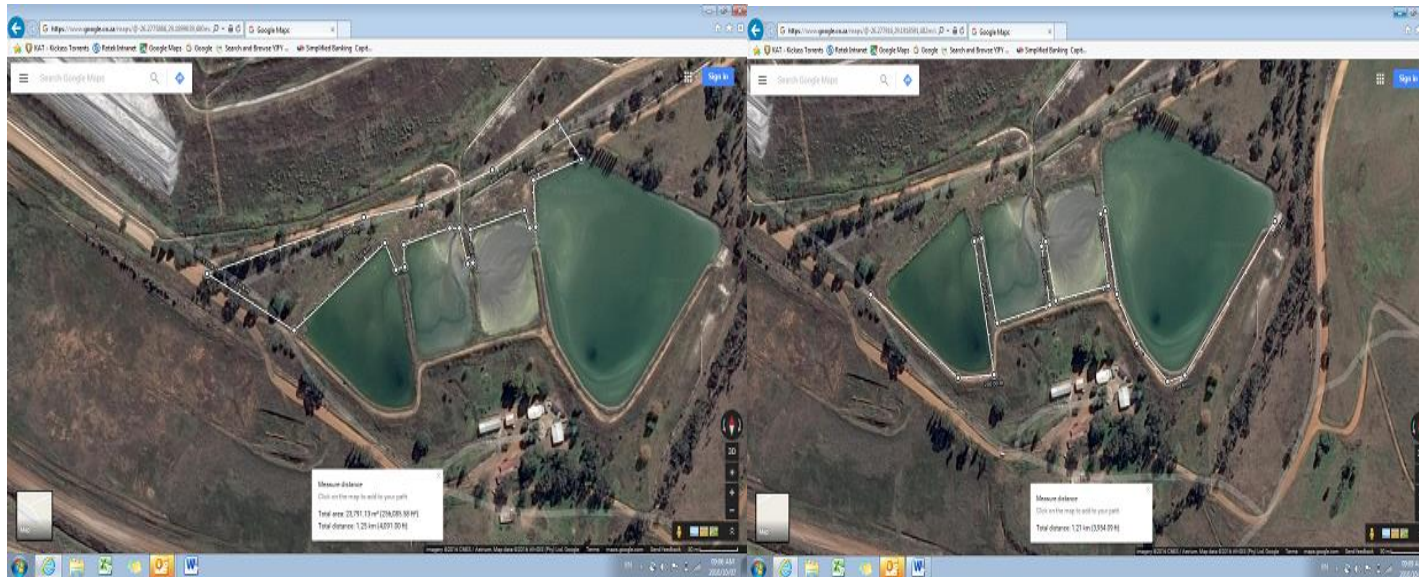
# KRIEL POWER STATION

## SCOPE OF WORK-HORTICULTURE

Document Identifier: 555-RER2001

Revision: 1

Page 5 of 28



- **AWR pile lines from AWR pump house to mine workshop (tar road & gravel road);**
  - **1,950m x 6m = 11,700m<sup>2</sup>**

**Public**

When downloaded from the document management system, this document is uncontrolled and the responsibility rests with the user to ensure it is in line with the authorised version on the system.

No part of this document may be reproduced without the expressed consent of the copyright holder, Eskom Holdings SOC Ltd, Reg No 2002/015527/30.

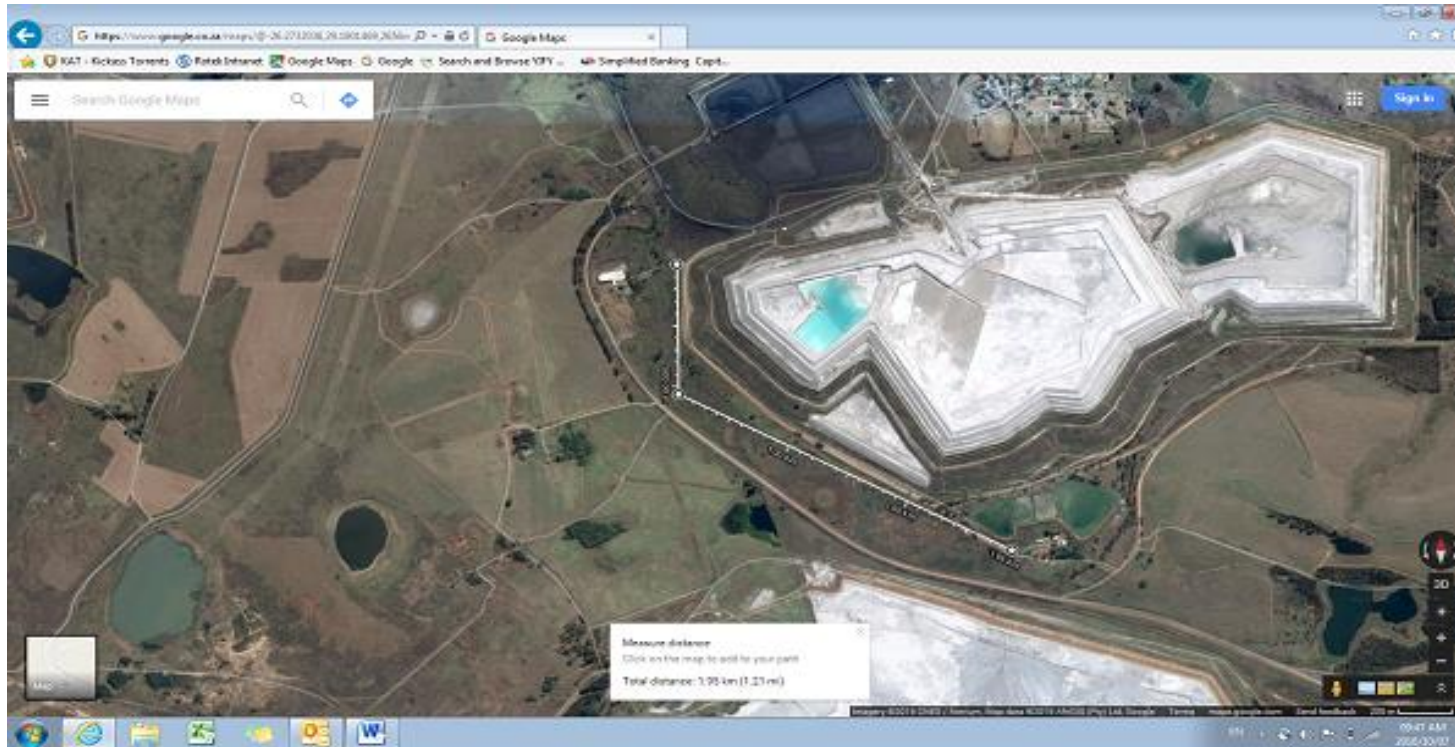
# KRIEL POWER STATION

## SCOPE OF WORK-HORTICULTURE

Document Identifier: 555-RER2001

Revision: 1

Page 6 of 28



- **AWR pipe line from mine workshop (tar road & gravel road) to 18 A & B Ash conveyors (Sump A area);**
  - **982m x 5m = 4,910m<sup>2</sup>**

**Public**

When downloaded from the document management system, this document is uncontrolled and the responsibility rests with the user to ensure it is in line with the authorised version on the system.

No part of this document may be reproduced without the expressed consent of the copyright holder, Eskom Holdings SOC Ltd, Reg No 2002/015527/30.

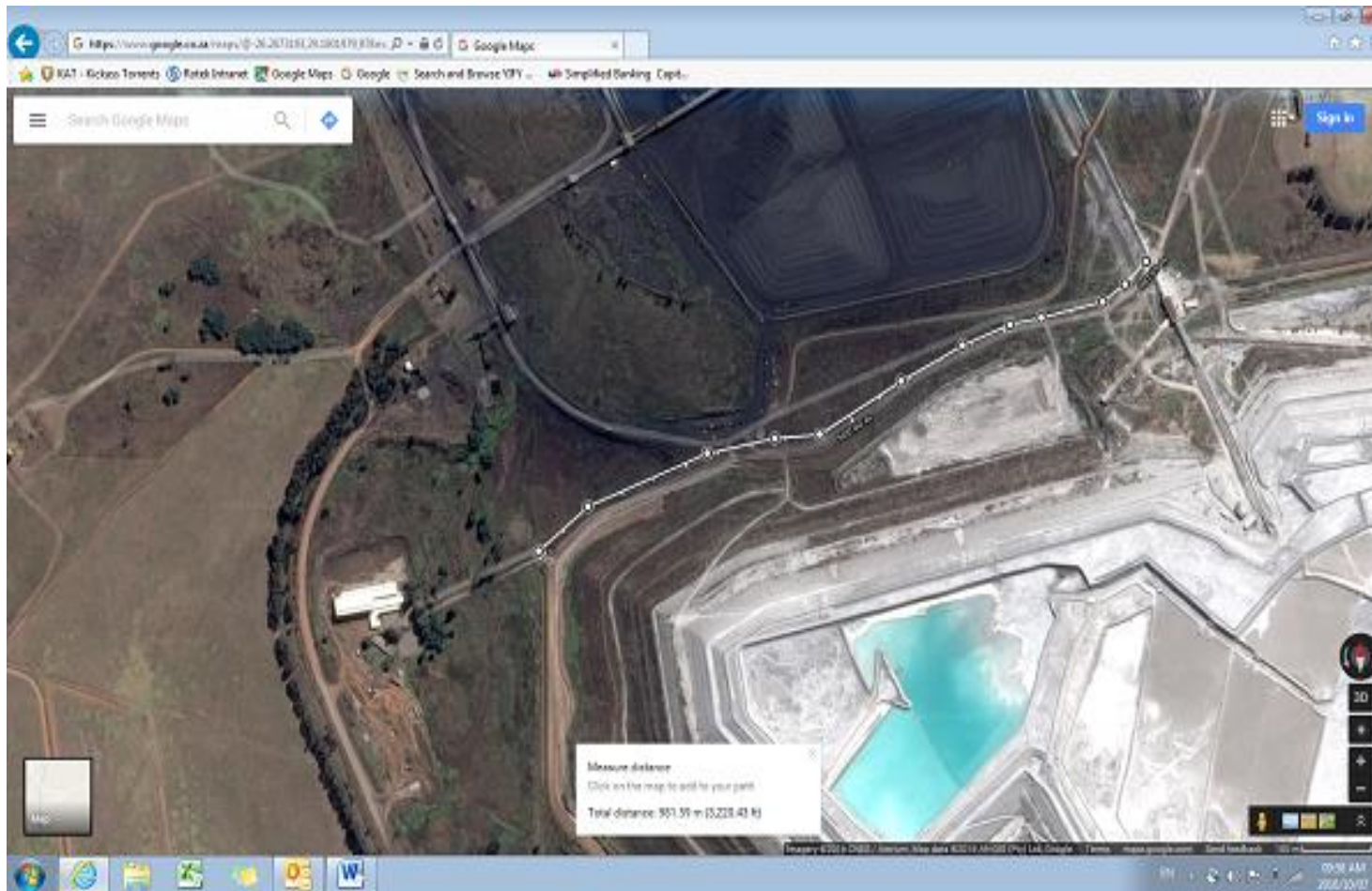
# KRIEL POWER STATION

## SCOPE OF WORK-HORTICULTURE

Document Identifier: 555-RER2001

Revision: 1

Page 7 of 28



**Public**

When downloaded from the document management system, this document is uncontrolled and the responsibility rests with the user to ensure it is in line with the authorised version on the system.

No part of this document may be reproduced without the expressed consent of the copyright holder, Eskom Holdings SOC Ltd, Reg No 2002/015527/30.

- Around Plant area;
  - 21,645m<sup>2</sup>



**Public**

When downloaded from the document management system, this document is uncontrolled and the responsibility rests with the user to ensure it is in line with the authorised version on the system.

No part of this document may be reproduced without the expressed consent of the copyright holder, Eskom Holdings SOC Ltd, Reg No 2002/015527/30.

- **All around the Ash dam road and solution trenches;**
  - **412,000m<sup>2</sup>**
  - Minimum 15 grass cutters

**Public**

When downloaded from the document management system, this document is uncontrolled and the responsibility rests with the user to ensure it is in line with the authorised version on the system.

No part of this document may be reproduced without the expressed consent of the copyright holder, Eskom Holdings SOC Ltd, Reg No 2002/015527/30.

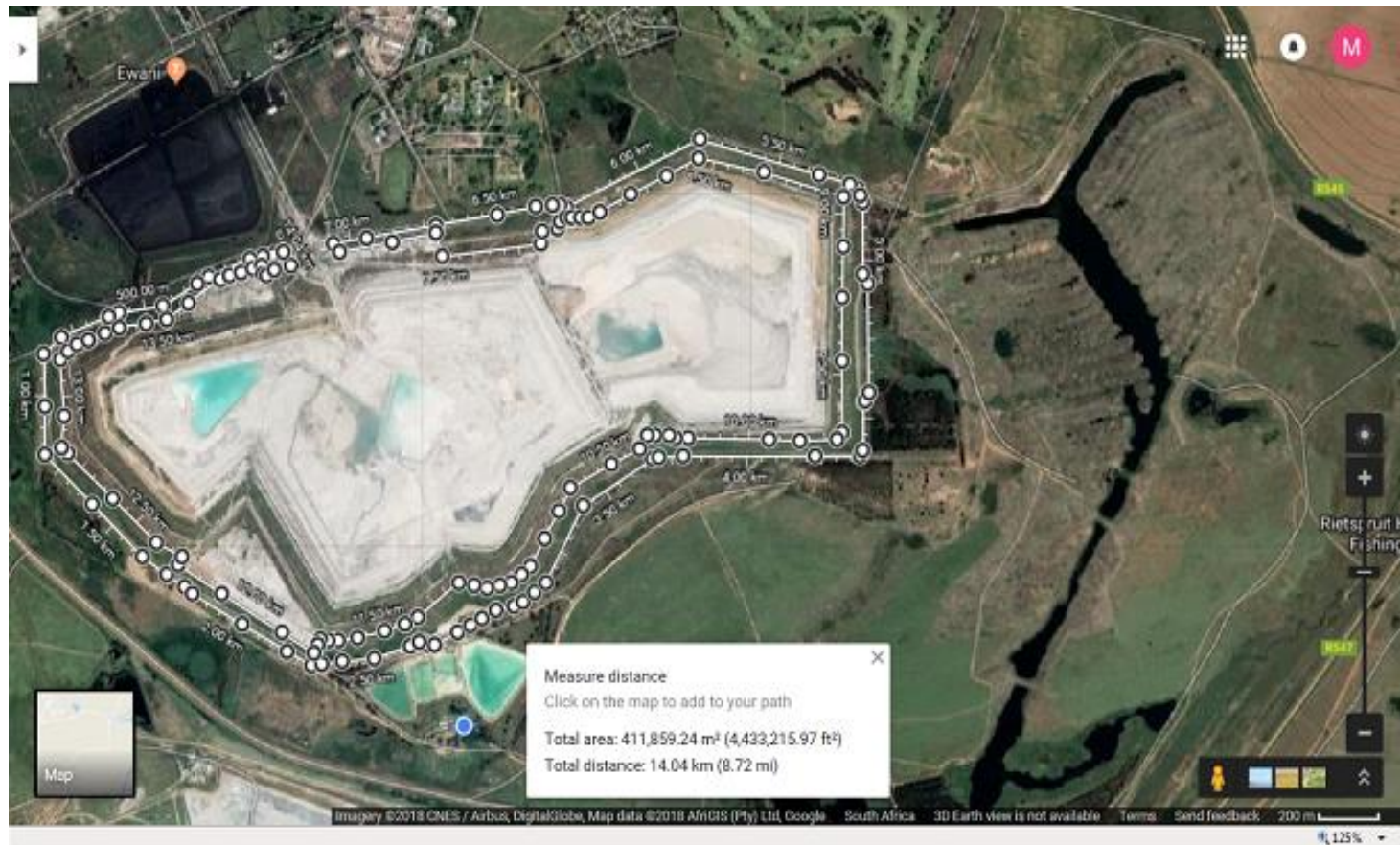
# KRIEL POWER STATION

## SCOPE OF WORK-HORTICULTURE

Document Identifier: 555-RER2001

Revision: 1

Page 10 of 28



**Public**

When downloaded from the document management system, this document is uncontrolled and the responsibility rests with the user to ensure it is in line with the authorised version on the system.

No part of this document may be reproduced without the expressed consent of the copyright holder, Eskom Holdings SOC Ltd, Reg No 2002/015527/30.

- **18 A & B ash conveyor belts**
  - **18 A & B Ash Conveyor belts –  $1,000\text{m} \times 4 = 4,000\text{m}^2$**
  - 2 meters both sides of the conveyor structure (Cut grass in this areas needs to be raked and removed)



### Public

When downloaded from the document management system, this document is uncontrolled and the responsibility rests with the user to ensure it is in line with the authorised version on the system.

No part of this document may be reproduced without the expressed consent of the copyright holder, Eskom Holdings SOC Ltd, Reg No 2002/015527/30.

- **Piezometer lines x 18**
  - **160m x 8 x 3m = 3840m<sup>2</sup>;**
  - **70m x 10 x 3 = 2100m<sup>2</sup>;**
  - **# 3840m<sup>2</sup> + 2100m<sup>2</sup> = 5,940m<sup>2</sup>**

**Public**

When downloaded from the document management system, this document is uncontrolled and the responsibility rests with the user to ensure it is in line with the authorised version on the system.

No part of this document may be reproduced without the expressed consent of the copyright holder, Eskom Holdings SOC Ltd, Reg No 2002/015527/30.



- **Overhead power lines – From ERI, Ash Dam office to Ducks pond**
  - **2700m x 5m = 13500m<sup>2</sup> cutting of grass and trees**

**Public**

When downloaded from the document management system, this document is uncontrolled and the responsibility rests with the user to ensure it is in line with the authorised version on the system.

No part of this document may be reproduced without the expressed consent of the copyright holder, Eskom Holdings SOC Ltd, Reg No 2002/015527/30.

# KRIEL POWER STATION

## SCOPE OF WORK-HORTICULTURE

Document Identifier: 555-RER2001

Revision: 1

Page 14 of 28



**Public**

When downloaded from the document management system, this document is uncontrolled and the responsibility rests with the user to ensure it is in line with the authorised version on the system.

No part of this document may be reproduced without the expressed consent of the copyright holder, Eskom Holdings SOC Ltd, Reg No 2002/015527/30.

- Overhead power lines (cutting of grass and trees) – From Eastern Wing Dam office to Cut 1 & 2
  - 1600m x 5m = 8000m<sup>2</sup>

**Public**

When downloaded from the document management system, this document is uncontrolled and the responsibility rests with the user to ensure it is in line with the authorised version on the system.

No part of this document may be reproduced without the expressed consent of the copyright holder, Eskom Holdings SOC Ltd, Reg No 2002/015527/30.



- **Cut 1, Cut 2 and Ducks pond**

### Public

When downloaded from the document management system, this document is uncontrolled and the responsibility rests with the user to ensure it is in line with the authorised version on the system.

No part of this document may be reproduced without the expressed consent of the copyright holder, Eskom Holdings SOC Ltd, Reg No 2002/015527/30.

- Cut 1 = 630m<sup>2</sup>
- Cut 2 = 1200 m<sup>2</sup>
- Ducks pond = 3300m<sup>2</sup>
- Total = 630 + 1200 + 3300 = 5,130 m<sup>2</sup>

**Public**

When downloaded from the document management system, this document is uncontrolled and the responsibility rests with the user to ensure it is in line with the authorised version on the system.

No part of this document may be reproduced without the expressed consent of the copyright holder, Eskom Holdings SOC Ltd, Reg No 2002/015527/30.

# KRIEL POWER STATION

## SCOPE OF WORK-HORTICULTURE

Document Identifier: 555-RER2001

Revision: 1

Page 18 of 28



**Public**

When downloaded from the document management system, this document is uncontrolled and the responsibility rests with the user to ensure it is in line with the authorised version on the system.

No part of this document may be reproduced without the expressed consent of the copyright holder, Eskom Holdings SOC Ltd, Reg No 2002/015527/30.



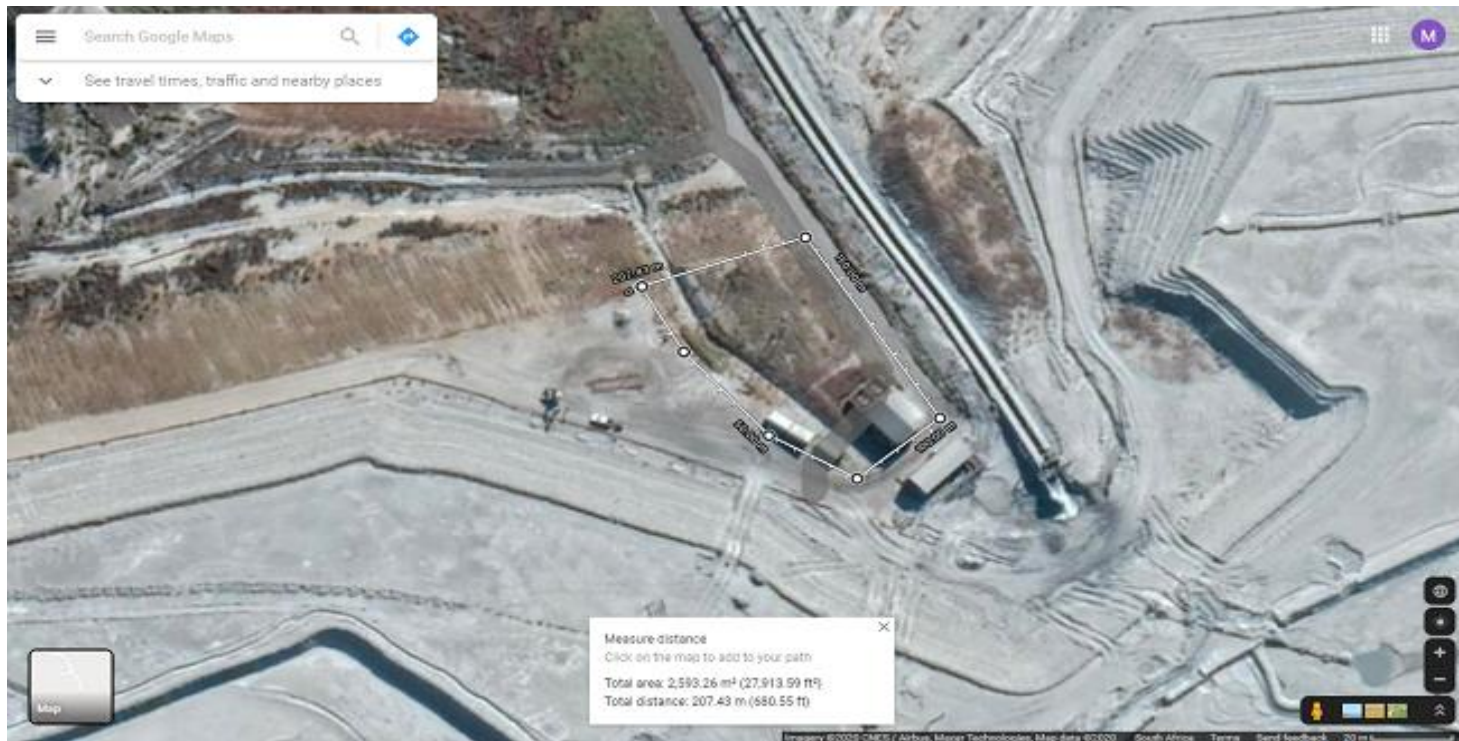
- **Slurry Plant**

### Public

When downloaded from the document management system, this document is uncontrolled and the responsibility rests with the user to ensure it is in line with the authorised version on the system.

No part of this document may be reproduced without the expressed consent of the copyright holder, Eskom Holdings SOC Ltd, Reg No 2002/015527/30.

- 2,600 m<sup>2</sup>



- CSY – behind offices
  - 1,200 m<sup>2</sup>

**Public**

When downloaded from the document management system, this document is uncontrolled and the responsibility rests with the user to ensure it is in line with the authorised version on the system.

No part of this document may be reproduced without the expressed consent of the copyright holder, Eskom Holdings SOC Ltd, Reg No 2002/015527/30.

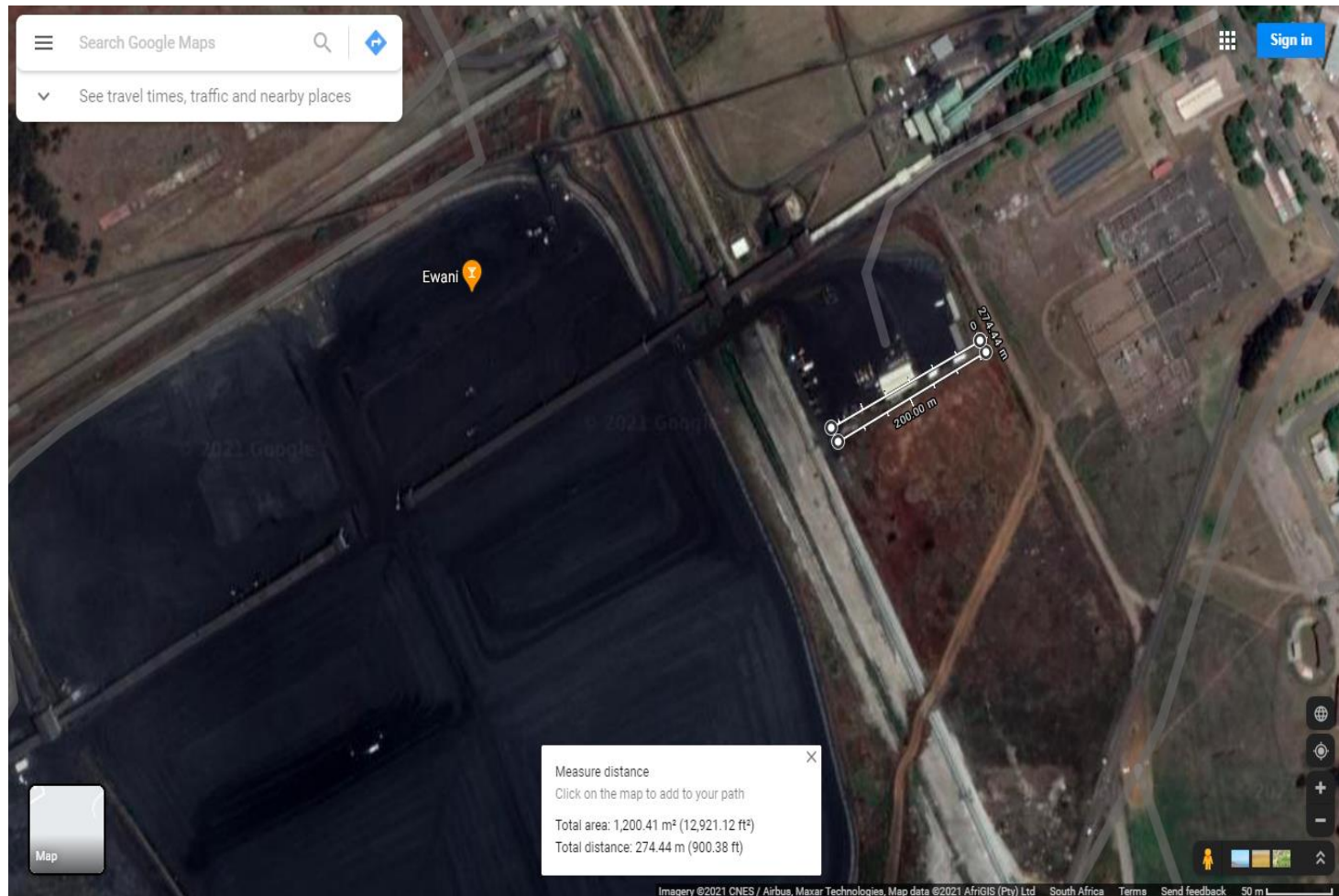
# KRIEL POWER STATION

## SCOPE OF WORK-HORTICULTURE

Document Identifier: 555-RER2001

Revision: 1

Page 21 of 28

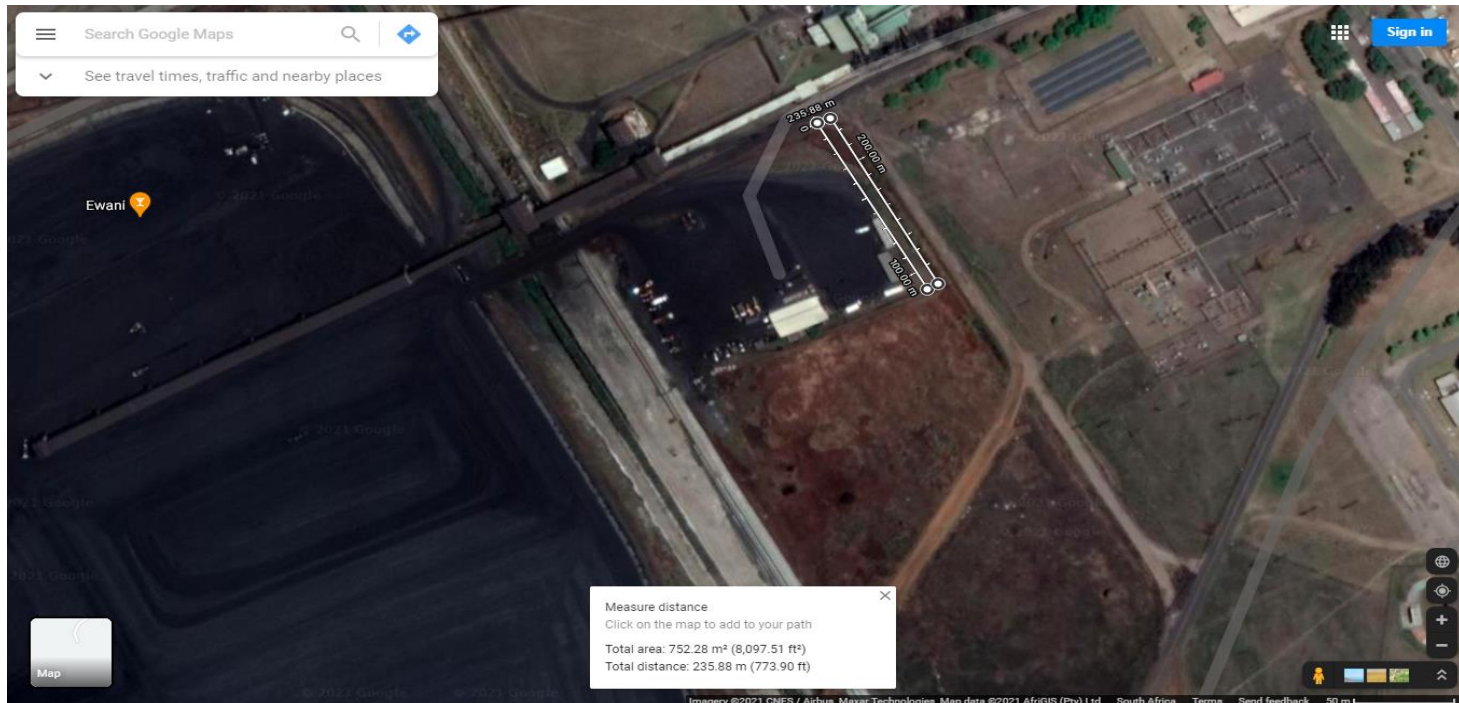


**Public**

When downloaded from the document management system, this document is uncontrolled and the responsibility rests with the user to ensure it is in line with the authorised version on the system.

No part of this document may be reproduced without the expressed consent of the copyright holder, Eskom Holdings SOC Ltd, Reg No 2002/015527/30.

- CSY – behind containers
  - 750 m<sup>2</sup>



- CSY – Ramp area
  - 1,300 m<sup>2</sup>

**Public**

When downloaded from the document management system, this document is uncontrolled and the responsibility rests with the user to ensure it is in line with the authorised version on the system.

No part of this document may be reproduced without the expressed consent of the copyright holder, Eskom Holdings SOC Ltd, Reg No 2002/015527/30.

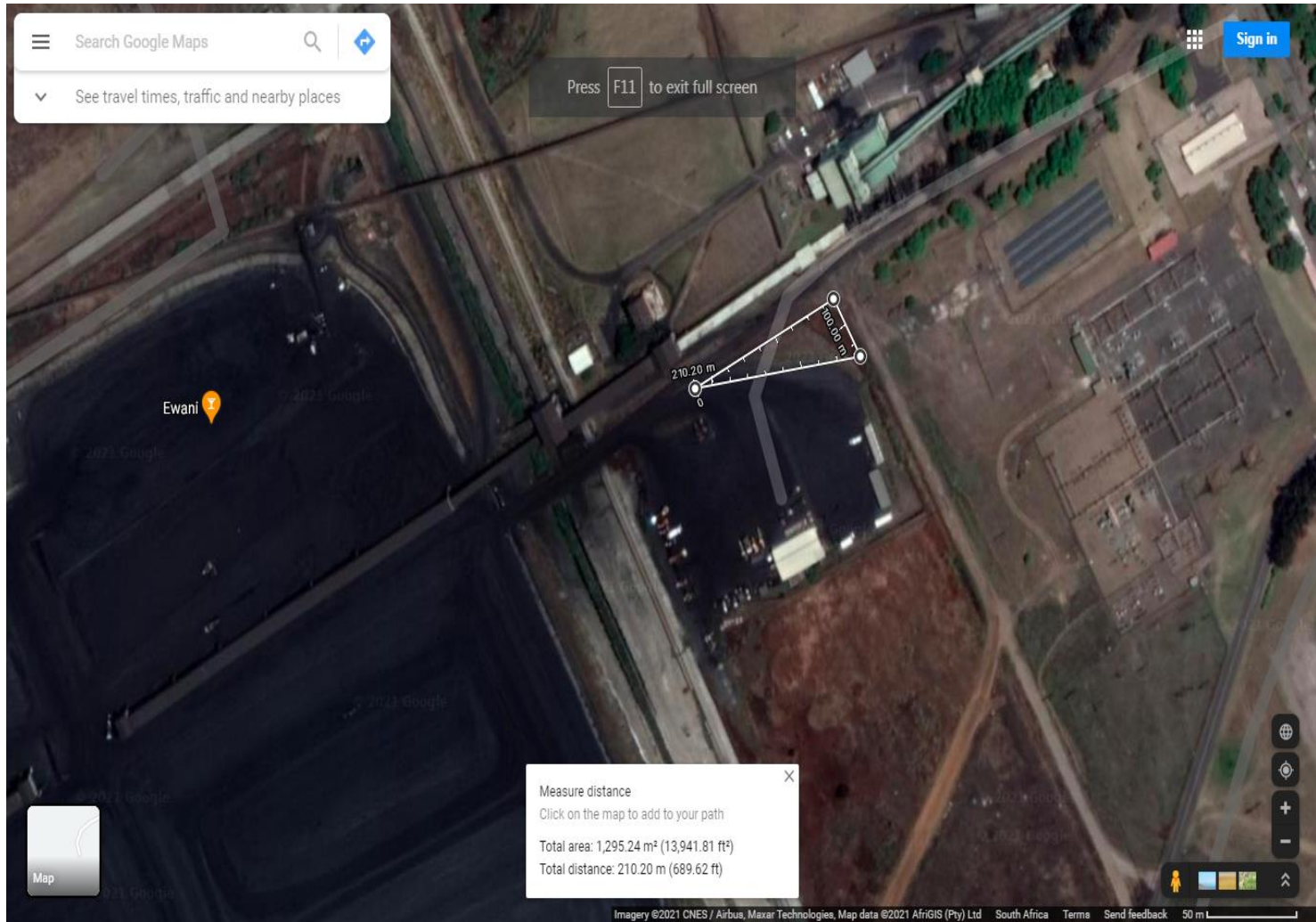
# KRIEL POWER STATION

## SCOPE OF WORK-HORTICULTURE

Document Identifier: 555-RER2001

Revision: 1

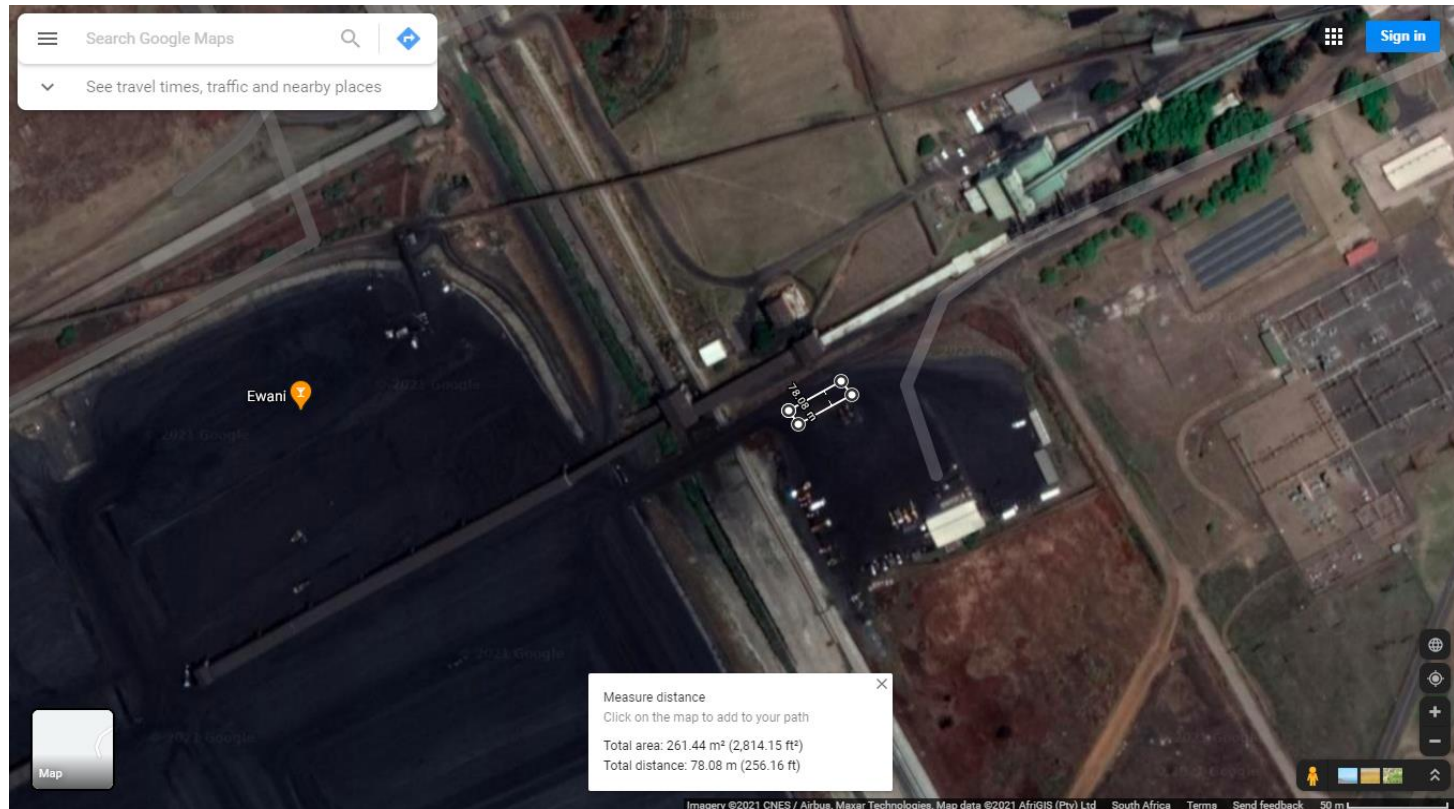
Page 23 of 28



When downloaded from the document management system, this document is uncontrolled and the responsibility rests with the user to ensure it is in line with the authorised version on the system.

No part of this document may be reproduced without the expressed consent of the copyright holder, Eskom Holdings SOC Ltd, Reg No 2002/015527/30.

- CSY – Next to YP parking
  - 250 m<sup>2</sup>



### Public

When downloaded from the document management system, this document is uncontrolled and the responsibility rests with the user to ensure it is in line with the authorised version on the system.

No part of this document may be reproduced without the expressed consent of the copyright holder, Eskom Holdings SOC Ltd, Reg No 2002/015527/30.

- **CSY – Around CSY solution trenches**
  - 1980m x 46 m
  - 91100 m<sup>2</sup>

**Public**

When downloaded from the document management system, this document is uncontrolled and the responsibility rests with the user to ensure it is in line with the authorised version on the system.

No part of this document may be reproduced without the expressed consent of the copyright holder, Eskom Holdings SOC Ltd, Reg No 2002/015527/30.

# KRIEL POWER STATION

## SCOPE OF WORK-HORTICULTURE

Document Identifier: 555-RER2001

Revision: 1

Page 26 of 28



**Public**

When downloaded from the document management system, this document is uncontrolled and the responsibility rests with the user to ensure it is in line with the authorised version on the system.

No part of this document may be reproduced without the expressed consent of the copyright holder, Eskom Holdings SOC Ltd, Reg No 2002/015527/30.

**BOQ**

Line	Work to be done (should it be required to cut grass, reeds or trees)	Cut frequency (raining season)	Unit of measure	Units
1.	Office area; ERI Office, AWR pump house, workshop and pipe lines; <b>46,215m<sup>2</sup></b>	<b>Monthly</b>	EA	60
2.	AWR dams area; <b>29,850m<sup>2</sup></b>	<b>Monthly</b>	EA	50
3.	AWR pile lines from AWR pump house to mine workshop – including uprooting of trees under AWR lines (tar road & gravel road); <b>11,700m<sup>2</sup></b>	<b>Bi-Monthly (every 2<sup>nd</sup> Month)</b>	EA	50
4.	AWR pipe line from mine workshop (tar road & gravel road) to 18 A & B Ash conveyors (Sump A area); <b>4,910m<sup>2</sup></b>	<b>Bi-Monthly (every 2<sup>nd</sup> Month)</b>	EA	30
5.	Around Plant area; <b>21,645m<sup>2</sup></b>	<b>Monthly</b>	EA	50
6.	All around the Ash dam road and solution trenches; <b>412,000m<sup>2</sup></b> (Minimum 15 grass cutters)	<b>Bi-Monthly (every 2<sup>nd</sup> Month)</b>	EA	30
7.	18A & B ash conveyor belts: <b>4,000m<sup>2</sup></b> (2 meters both sides of the conveyor structure and cut crass to be raked and removed)	<b>3<sup>rd</sup> Monthly</b>	EA	30
8.	Piezometer lines x 18; <b>5,940m<sup>2</sup></b>	<b>Bi-Monthly (every 2<sup>nd</sup> Month)</b>	EA	40
9.	Overhead power lines – From ERI, Ash Dam office to Ducks pond (cutting of grass and trees); <b>13,500m<sup>2</sup></b>	<b>3<sup>rd</sup> Monthly</b>	EA	30
10.	Overhead power lines) – From Eastern Wing Dam office to Cut 1 & 2 (cutting of grass and trees; <b>8,000m<sup>2</sup></b>	<b>3<sup>rd</sup> Month</b>	EA	30
11.	Cut 1, Cut 2 and Ducks pond areas; <b>5130 m<sup>2</sup></b>	<b>Bi-Monthly (every 2<sup>nd</sup> Month)</b>	EA	50

**Public**

When downloaded from the document management system, this document is uncontrolled and the responsibility rests with the user to ensure it is in line with the authorised version on the system.

No part of this document may be reproduced without the expressed consent of the copyright holder, Eskom Holdings SOC Ltd, Reg No 2002/015527/30.

# KRIEL POWER STATION

## SCOPE OF WORK-HORTICULTURE

Document Identifier: 555-RER2001

Revision: 1

Page 28 of 28

12.	Slurry Plant areas; <b>2600 m<sup>2</sup></b>	<b>Bi-Monthly (every 2<sup>nd</sup> Month)</b>	EA	60
13.	CSY office area; <b>1200 m<sup>2</sup></b>	<b>Monthly</b>	EA	60
14.	CSY container area; <b>750 m<sup>2</sup></b>	<b>Monthly</b>	EA	60
15.	CSY ramp areas; <b>1300 m<sup>2</sup></b>	<b>Monthly</b>	EA	60
16.	CSY next to YP parking areas; <b>250 m<sup>2</sup></b>	<b>Monthly</b>	EA	60
17.	CSY – Solution trenches around CSY; <b>91100 m<sup>2</sup></b>	<b>Bi-Monthly (every 2<sup>nd</sup> Month)</b>	EA	50

### COMMENTS


**Public**

When downloaded from the document management system, this document is uncontrolled and the responsibility rests with the user to ensure it is in line with the authorised version on the system.

No part of this document may be reproduced without the expressed consent of the copyright holder, Eskom Holdings SOC Ltd, Reg No 2002/015527/30.